

FIREPLACE KIT SYSTEM FROM BRUNNER



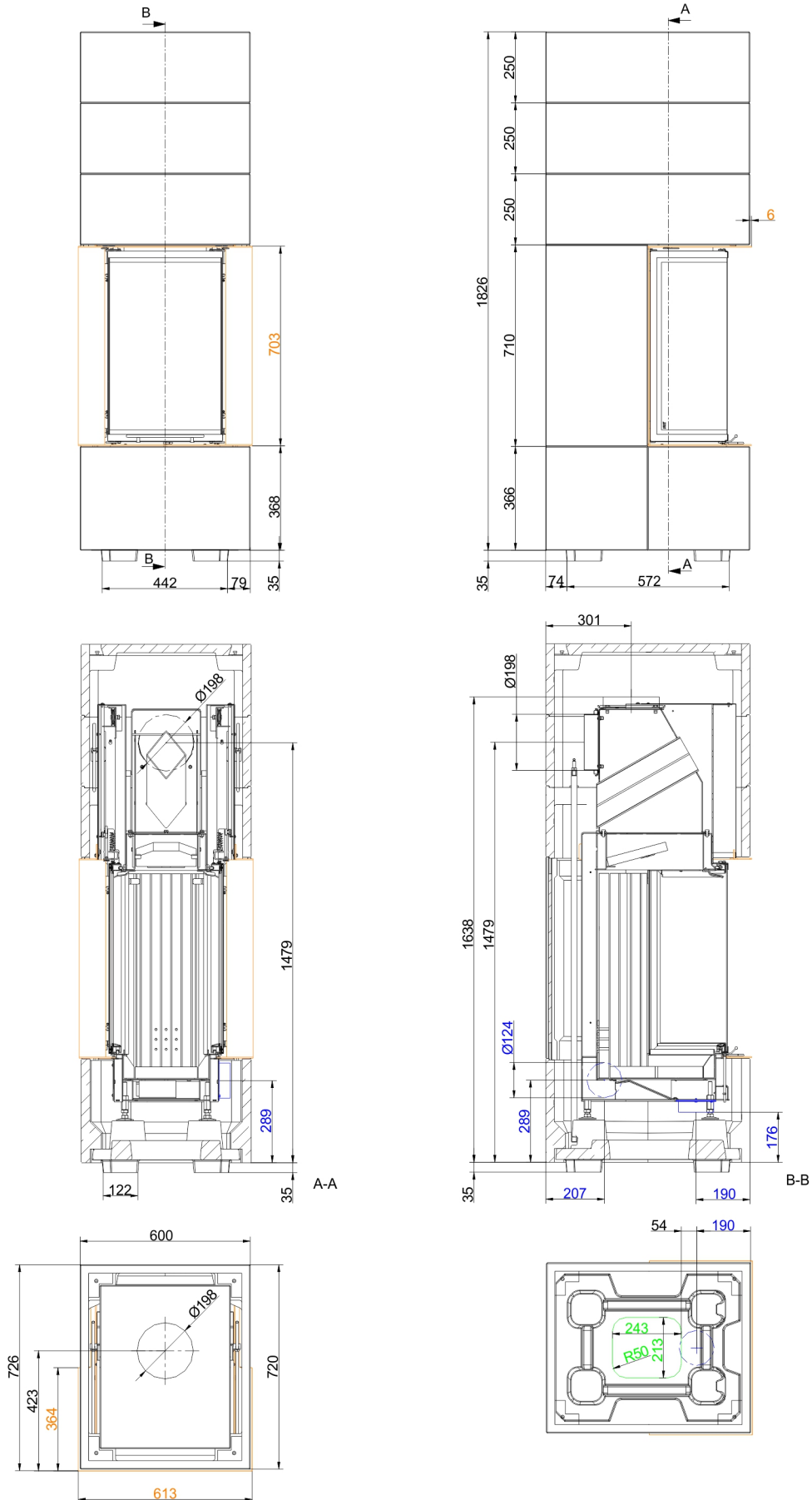
BSK 11 with Panorama-Kamin 70/25/40/25

State: 2018-03-02



BRUNNER[®]
made in germany.

Dimension sheets - BSK 11 with Panorama-Kamin 70/25/40/25



We suggest for CAD planing Palette CAD. Permanent updated drawings: www.brunner.de
 Frames / front versions are marked colored.

Planning and installation - BSK 11 with Panorama-Kamin 70/25/40/25

| | | |
|--|--|-----------|
| Tested according to | | EN 13229 |
| Data for functional demonstration | | |
| Rated heat power | kW | 8 |
| Fire wood volume | kg/h | 2.4 |
| Flue gas mass flow | g/s | 7 |
| Flue gas temperature | g/s | 210 |
| Necessary supply pressure ¹⁾ | Pa | 12 |
| Combustion air consumption | m ³ /h | 22 |
| Combustion air connection Ø | mm | 125 |
| Cladding components | | |
| Foot print (W x D) | mm | 600 x 720 |
| Overall height | mm | 1856 |
| Height of extension ring | mm | 250 |
| Minimal distances | | |
| to mounting wall | cm | 5 |
| to mounting wall with heat protection panels | cm | 0 |
| to combustible mounting wall | cm | 10 |
| to combustible mounting wall with heat protection panels | cm | 5 |
| from top of fireplace to ceiling | cm | 50 |
| Cross-section of gratings ²⁾ | | |
| Convection air | cm ² | 723 |
| Supply air | cm ² | 732 |
| Thermal insulation without / with air gratings | | |
| In ceiling region connection without/with air grate | cm | 19 / 14 |
| Weight | | |
| Total weight | kg | 460 |
| Meets requirement/limit values for: | | |
| Germany/ Austria / Suisse / Norway | 1.BImSchV (Stufe 2) / 15a BvG (2015) / LRV / - | |

1) Damper flap recommended

2) Openings for the air